



English Teachers On Call

**USE & PRINTING outside of eTOC are  
strictly PROHIBITED.**

This document is for use in eTOC&Flex training sessions, use outside of eTOC is strictly prohibited. Copyright © Surely work.co- All Rights Reserved

# CITY

**1**





# station

**The station has trains.**





# pool

**The pool has water.**





# park

The park is windy.



# school

**The school is big.**







# hospital

The hospital is far.



# ZOO

**The zoo has monkeys.**





# bus stop

**The bus stop line is long.**







# restaurant



**The restaurant food is yummy.**



# fire station

The fire station is red.



# supermarket

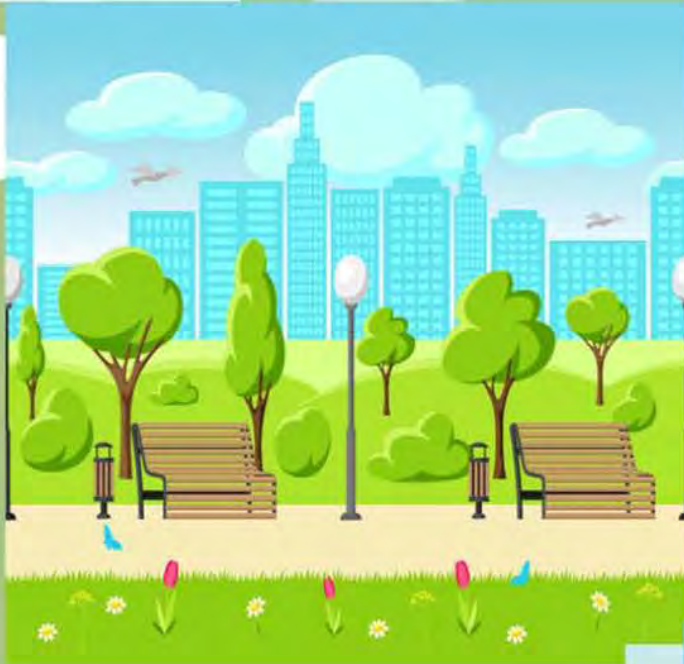
## I go to the supermarket.





# Identify each place in the city's name.















English Teachers On Call

**USE & PRINTING outside of eTOC are  
strictly PROHIBITED.**

This document is for use in eTOC&Flex training sessions, use outside of eTOC is strictly prohibited. Copyright © Surely work.co- All Rights Reserved



# WELL DONE!







English Teachers On Call

**USE & PRINTING outside of eTOC are  
strictly PROHIBITED.**

This document is for use in eTOC&Flex training sessions, use outside of eTOC is strictly prohibited. Copyright © Surely work.co- All Rights Reserved



# THE END

