



# SHAPES





# square

The box is a square.



# triangle

The pyramid is a triangle.



eTQC

English Teachers On Call

USE & PRINTING outside of eTOC are  
strictly PROHIBITED.

This document is for use in eTOC&Flex training sessions, use outside of eTOC is  
strictly prohibited. Copyright © Surely work.co- All Rights Reserved

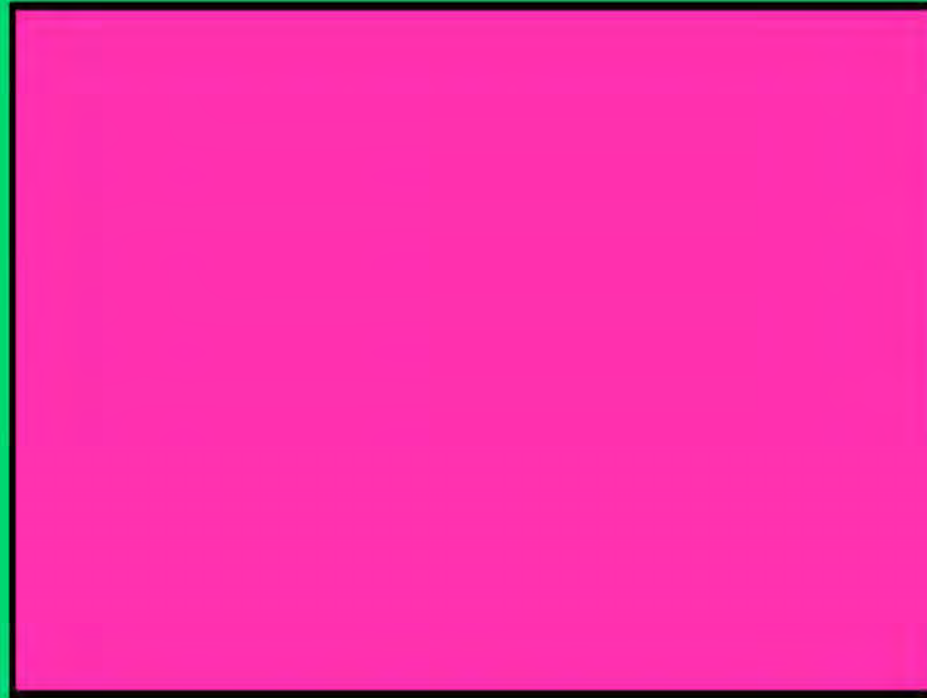


# circle

The pizza is a circle.



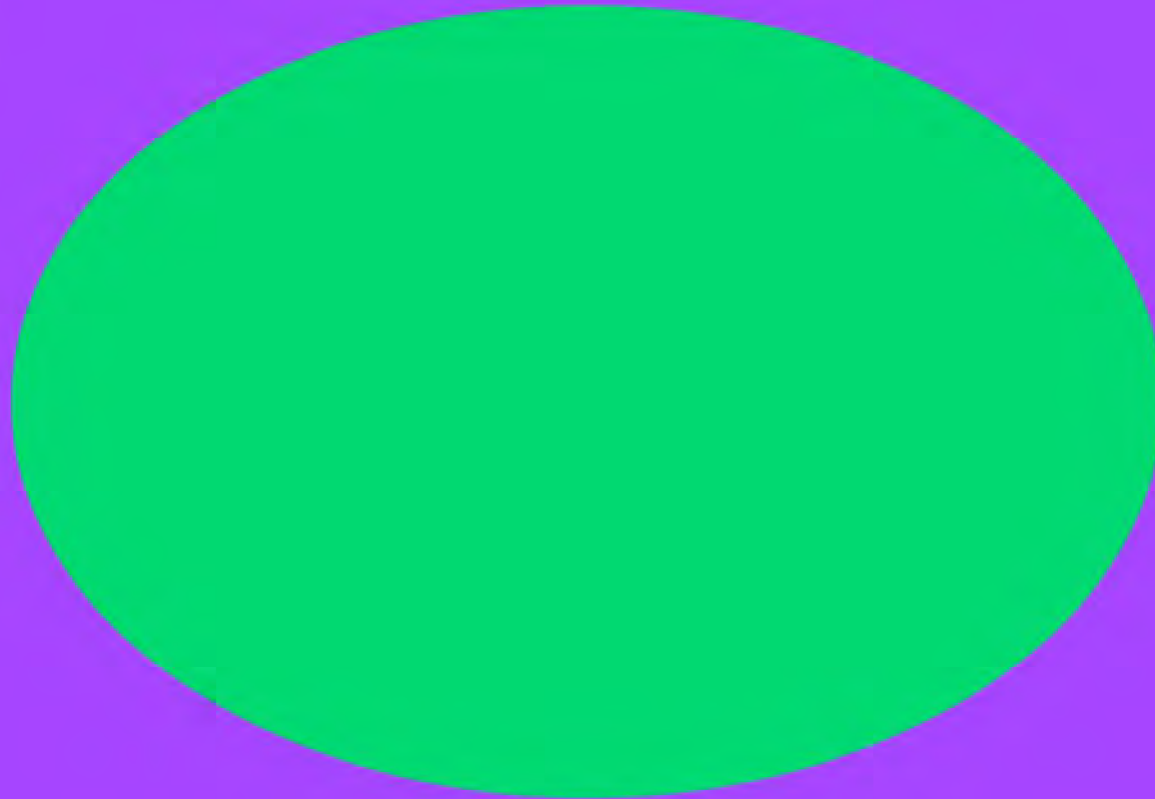




# rectangle

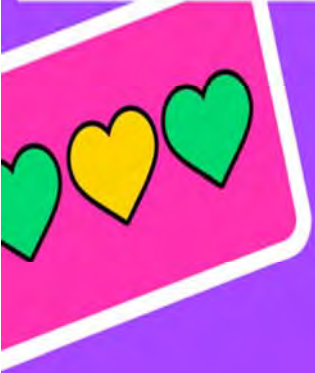
The door is a rectangle.





**oval**

**The egg is an oval.**





**star**

**You get a gold star.**



**eTOC**

English Teachers On Call

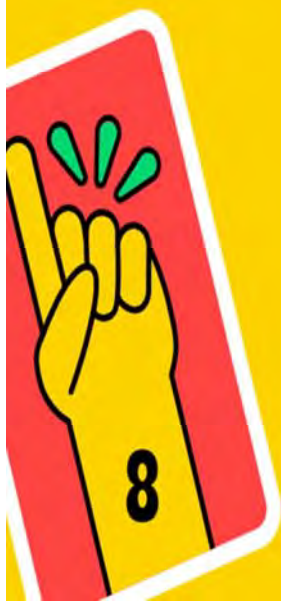
**USE & PRINTING outside of eTOC are  
strictly PROHIBITED.**

This document is for use in eTOC&Flex training sessions, use outside of eTOC is  
strictly prohibited. Copyright © Surely work.co- All Rights Reserved



# heart

**The heart is red.**







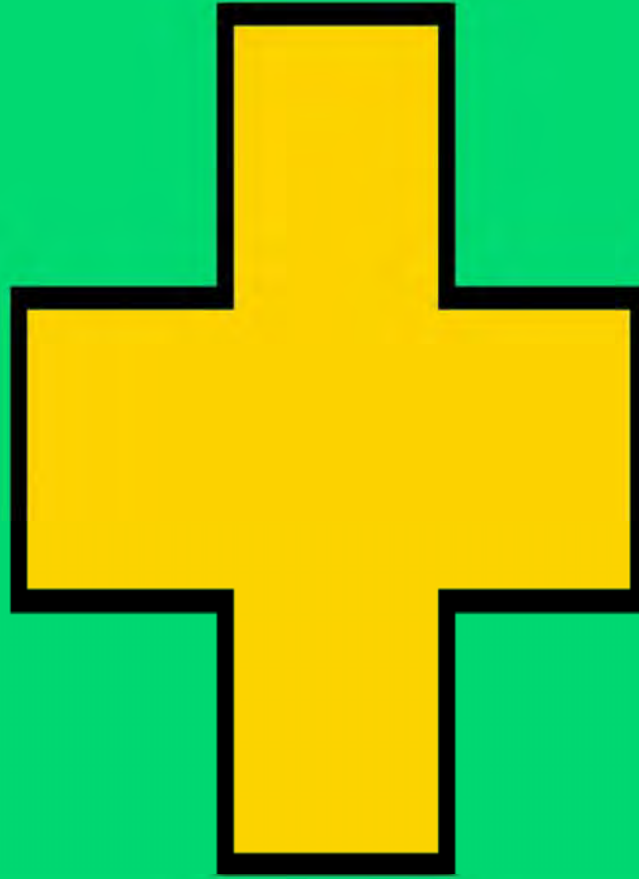
This document is for use in eTOC&Flex training sessions, use outside of eTOC is strictly prohibited. Copyright © Surely work.co- All Rights Reserved



# diamond

The diamond is big.

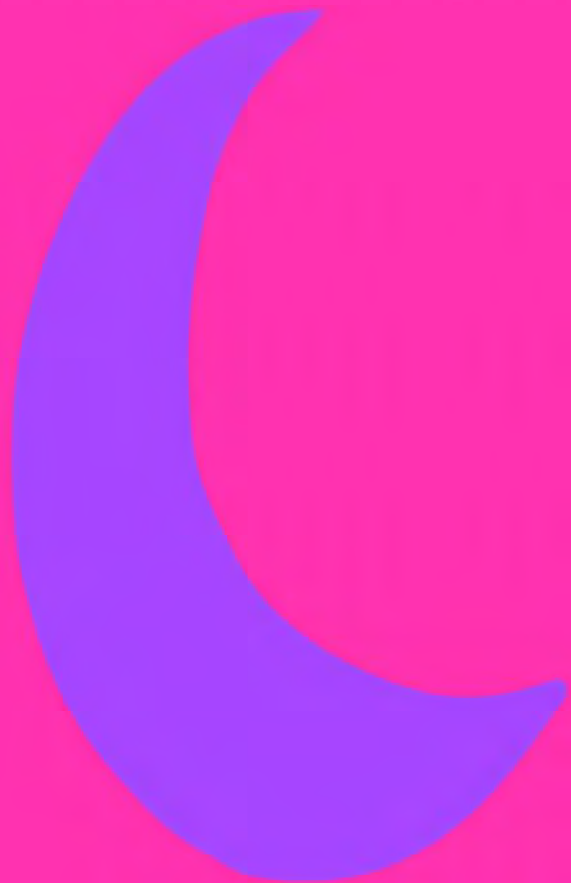




**cross**

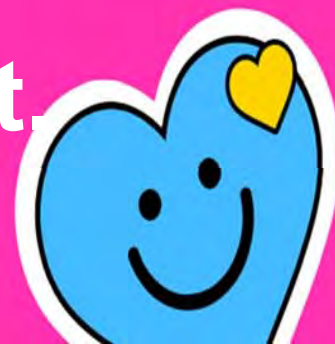
**The hospital has a cross.**



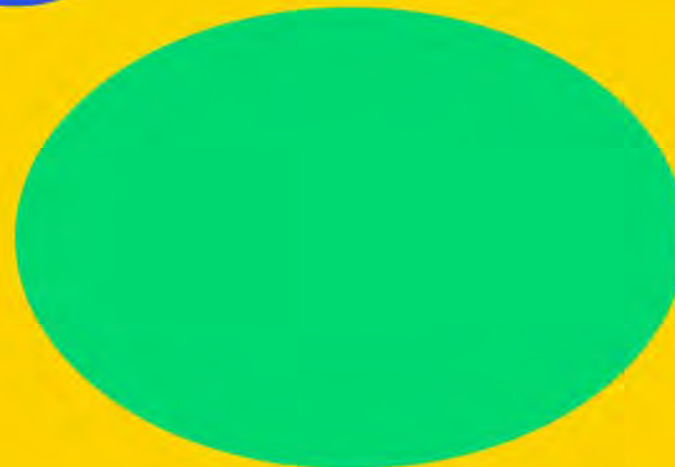


# crescent

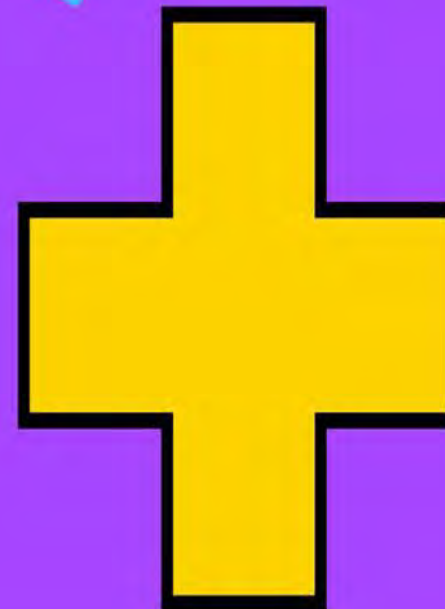
The moon is a crescent.



# Identify each shape's name.







# GREAT JOB!





# THE END

