

VI40 Control and Influence

BEGINNER



Copyright © 2018 Surely work.co

完全版テキストはレッスン前に担当講師から受け取って下さい

講師のスカイプチャットにテキスト名を送って下さい

Your teacher can send you the complete material.

Please ask them to send the complete version of this material before the lesson.

CONTROL AND INFLUENCE

Run the show --- to be responsible for the final decisions

Run a tight ship --to manage in an efficient manner

Play favorites---to treat one person better than the other, bias

Activity 1 : Fill in the blanks

When I was in High School , my Math teacher _____ .
My dad always _____ when it comes to money
management.

We _____ inspite of the global crisis.
Her boss obviously _____ among his employees.
Meldz taught some rowdy students but she were able to

_____ .
AJ _____ during the team building meeting.

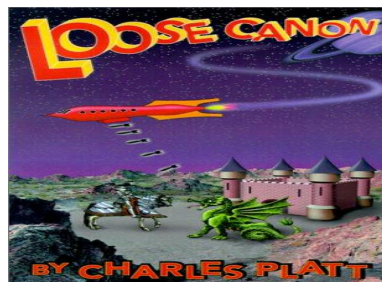
Copyright © 2018 Surely work.co

完全版テキストはレッスン前に担当講師から受け取って下さい

講師のスカイプチャットにテキスト名を送って下さい

Your teacher can send you the complete material.

Please ask them to send the complete version of this material before the lesson.



CONTROL AND INFLUENCE

Asleep at the wheel—not acting to control a situation properly

He was asleep at the wheel.

Loose canon ----- actions that is unpredictable and uncontrollable

Activity 1 : Make a sentence using the idioms above.

Activity 2 : Picture Story

Copyright © 2018 Surely work.co

完全版テキストはレッスン前に担当講師から受け取って下さい

講師のスカイプチャットにテキスト名を送って下さい

Your teacher can send you the complete material.

Please ask them to send the complete version of this material before the lesson.

CONTROL AND INFLUENCE

Pull strings ----- to influence others for one's own advantage

.

The soccer player pulled string in the middle of the field.

Throw one's weight around----to exert influence or power for the purpose of showing off or to brag out.

Be on the take---to accept illegal payments, under the table, red tape, kickback

Activity 1 : Let's talk : Who is.....

...the person who influenced you the most?

...the person that you look up to when you were a kid?

...the person who gives advice in your dire needs?

...the person that you considered your mentor?

Activity 2 Think about

Copyright © 2018 Surely work.co

完全版テキストはレッスン前に担当講師から受け取って下さい

講師のスカイプチャットにテキスト名を送って下さい

Your teacher can send you the complete material.

Please ask them to send the complete version of this material before the lesson.

members/friends in preserving the environment.